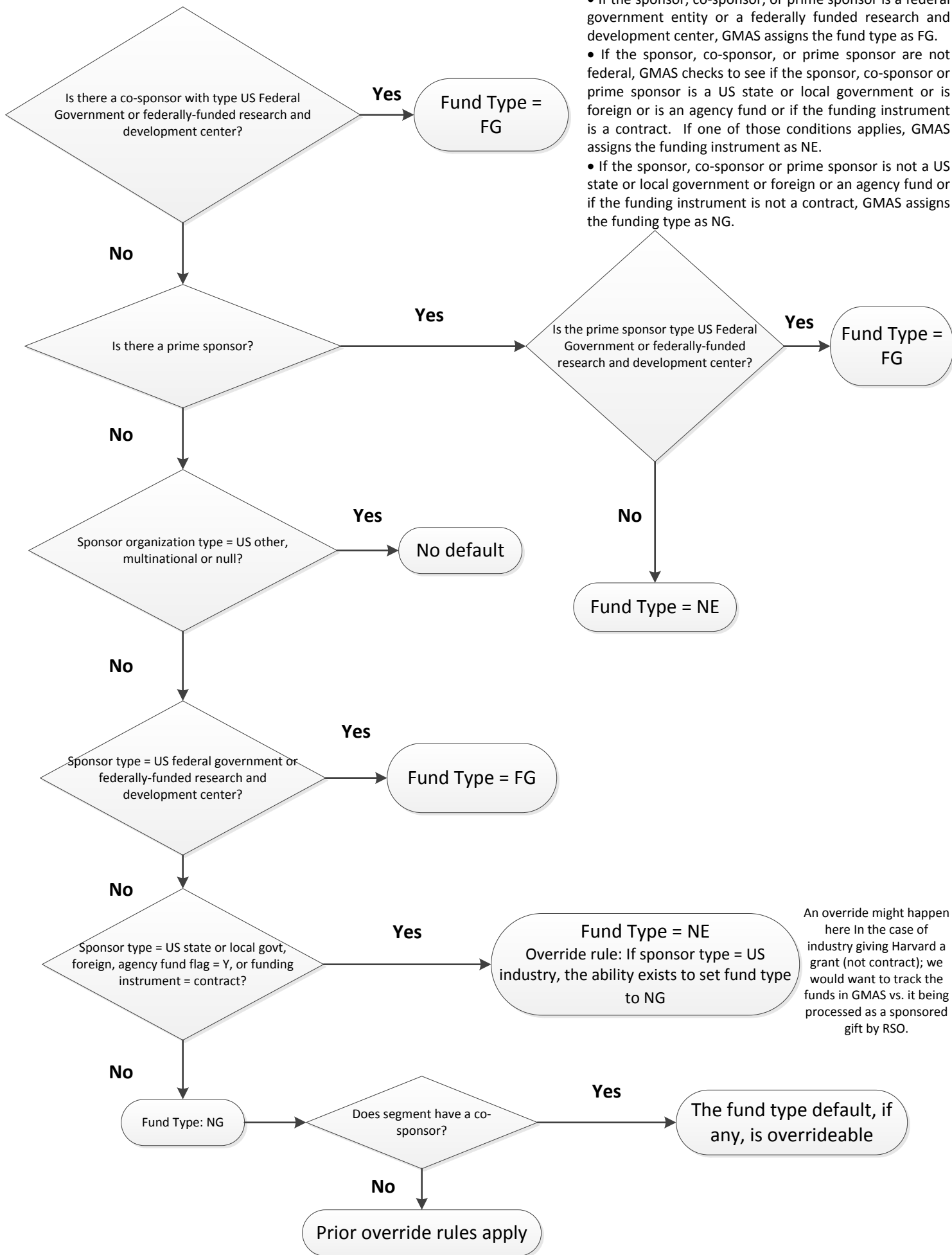


How GMAS Determines Fund Type: FG, NE or NG

GMAS Process Summary

- If the sponsor, co-sponsor, or prime sponsor is a federal government entity or a federally funded research and development center, GMAS assigns the fund type as FG.
- If the sponsor, co-sponsor, or prime sponsor are not federal, GMAS checks to see if the sponsor, co-sponsor or prime sponsor is a US state or local government or is foreign or is an agency fund or if the funding instrument is a contract. If one of those conditions applies, GMAS assigns the funding instrument as NE.
- If the sponsor, co-sponsor or prime sponsor is not a US state or local government or foreign or an agency fund or if the funding instrument is not a contract, GMAS assigns the funding type as NG.



An override might happen here In the case of industry giving Harvard a grant (not contract); we would want to track the funds in GMAS vs. it being processed as a sponsored gift by RSO.